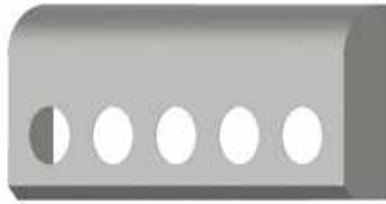


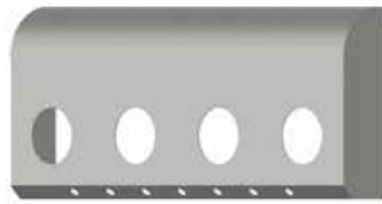
SHOCKBOX COVERS



Iowa Customs Ghost Mount Internal Structure is easily installed without drilling any holes or double-sided tape. The paintable, smooth aluminum or #8 Non-Directional Polished Stainless Steel box covers the sleeper shock suspension. A clean, finished look when installed with our sleeper air bag covers.



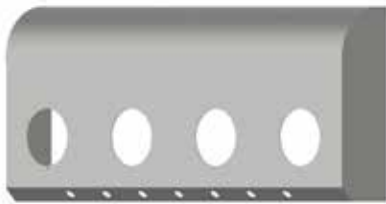
(5) - 4 in. light holes
IC172001-21



(5) - 4 in. light holes with 7 bullets
IC172002-21



(4) - 4 in. light holes
IC172003-21



(4) - 4 in. light holes with 7 bullets
IC172004-21



(10) 3/4 in. light holes on 45° face
IC172005-21



(7) 3/4 in. light holes on 45° face
IC172007-21



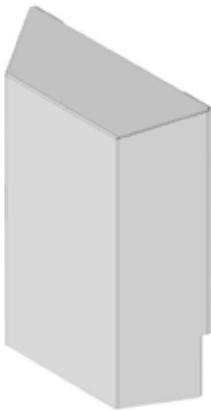
Blank
IC172020-14



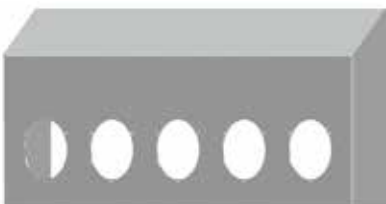
Blank
IC172008-21



(4) - 4 in. light holes
IC172018-21



3M VHB
Tape Mounted
Tool-Less
Installation
IC172200-14



(5) - 4 in. light holes
IC172021-14



(4) - 4 in. light holes
IC172022-14



(3) - 4 inch light holes
IC172017-21



Fitment:



Peterbilt 389 and Peterbilt 386

FINISHES (-xx)

Part #	Design	Product
14	45° Top	#8 304 Non-Directional Polished Stainless Steel
21	Round Top	Smooth Aluminum / Paintable Finish

PRODUCT INFORMATION

Fitment: Peterbilt 389 and Peterbilt 386

Part #	Sleep Size	Design Info	Light Information
IC172001-21	48 in. / 52 in. & 63 in. / 72 in.	Round Top	(5) 4 in. Lights on Face Only 
IC172002-21	48 in. / 52 in. & 63 in. / 72 in.	Round Top	(5) 4 in. Lights on Face & (7) 3/4 in. Lights on 45° Flange
IC172003-21	48 in. / 52 in. & 63 in. / 72 in.	Round Top	(4) 4 in. Lights on Face Only 
IC172004-21	48 in. / 52 in. & 63 in. / 72 in.	Round Top	(4) 4 in. Lights on Face & (7) 3/4 in. Lights on 45° Flange
IC172005-21	48 in. / 52 in. & 63 in. / 72 in.	Round Top	(10) 3/4 in. Lights on Face Only
IC172006-21	48 in. / 52 in. & 63 in. / 72 in.	Round Top	(10) 3/4 in. Lights on Face & (7) 3/4 in. Lights on 45° Flange
IC172007-21	48 in. / 52 in. & 63 in. / 72 in.	Round Top	(7) 3/4 in. Lights on 45° Flange Only
IC172008-21	48 in. / 52 in. & 63 in. / 72 in.	Round Top	Blank with No Light Holes
IC172020-14	48 in. / 52 in. & 63 in. / 72 in.	45° Top	No Holes
IC172021-14	48 in. / 52 in. & 63 in. / 72 in.	45° Top	(5) 4 in. Lights on Face
IC172022-14	48 in. / 52 in. & 63 in. / 72 in.	45° Top	(4) 4 in. Lights on Face
IC172015-21	48 in. / 52 in. & 63 in. / 72 in.	Round Top	Center Recessed Blank with No Light Holes
IC172016-21	48 in. / 52 in. & 63 in. / 72 in.	Round Top	Center Recessed with (2) 4 in. Light Holes
IC172017-21	48 in. / 52 in. & 63 in. / 72 in.	Round Top	Center Recessed with (3) 4 in. Light Holes
IC172018-21	48 in. / 52 in. & 63 in. / 72 in.	Round Top	Center Recessed with (4) 4 in. Light Holes
IC172041-21	70 in. / 78 in.	Round Top	(5) 4 in. Lights on Face Only
IC172042-21	70 in. / 78 in.	Round Top	(5) 4 in. Lights on Face & (7) 3/4 in. Lights on 45° Flange
IC172043-21	70 in. / 78 in.	Round Top	(4) 4 in. Lights on Face Only
IC172044-21	70 in. / 78 in.	Round Top	(4) 4 in. Lights on Face & (7) 3/4 in. Lights on 45° Flange
IC172045-21	70 in. / 78 in.	Round Top	(10) 3/4 in. Lights on Face Only
IC172046-21	70 in. / 78 in.	Round Top	(10) 3/4 in. Lights on Face & (7) 3/4 in. Lights on 45° Flange
IC172047-21	70 in. / 78 in.	Round Top	(7) 3/4 in. Lights on 45° Flange Only
IC172048-21	70 in. / 78 in.	Round Top	Blank with No Light Holes
IC172055-21	70 in. / 78 in.	Recessed Center Round Top	Blank with No Light Holes
IC172056-21	70 in. / 78 in.	Recessed Center Round Top	(2) 4 in. Light Holes
IC172057-21	70 in. / 78 in.	Recessed Center Round Top	(3) 4 in. Light Holes
IC172058-21	70 in. / 78 in.	Recessed Center Round Top	(4) 4 in. Light Holes
IC172060-14	70 in. / 78 in.	45° Top	No Holes
IC172061-14	70 in. / 78 in.	45° Top	(5) 4 in. Lights on Face
IC172062-14	70 in. / 78 in.	45° Top	(4) 4 in. Lights on Face

Part #	Product	Information	Finish	Fitment
IC172200-14	Shock Box Cover for Rear Sleeper	Sold Individually	#8 304 Polished Stainless Steel	See QR Code